

The background is a soft-focus photograph of a dining area. A wooden chair with a diamond-shaped cutout in the backrest is the central focus. In the foreground, a wooden bowl filled with various fruits, including oranges, a banana, and grapes, sits on a dark wooden table. The overall lighting is warm and natural, creating a cozy atmosphere.

MARIS GROVE
find your perfect fit



life. style.



The perfect fit for *your* lifestyle.

Welcome to Maris Grove—an exciting, maintenance-free world solely created to ensure you can live your retirement years to the fullest. With such a variety of apartment designs in the community, we're certain we have something to fit your unique lifestyle. It's just a matter of finding the one meant for you.

Jim & Jackie



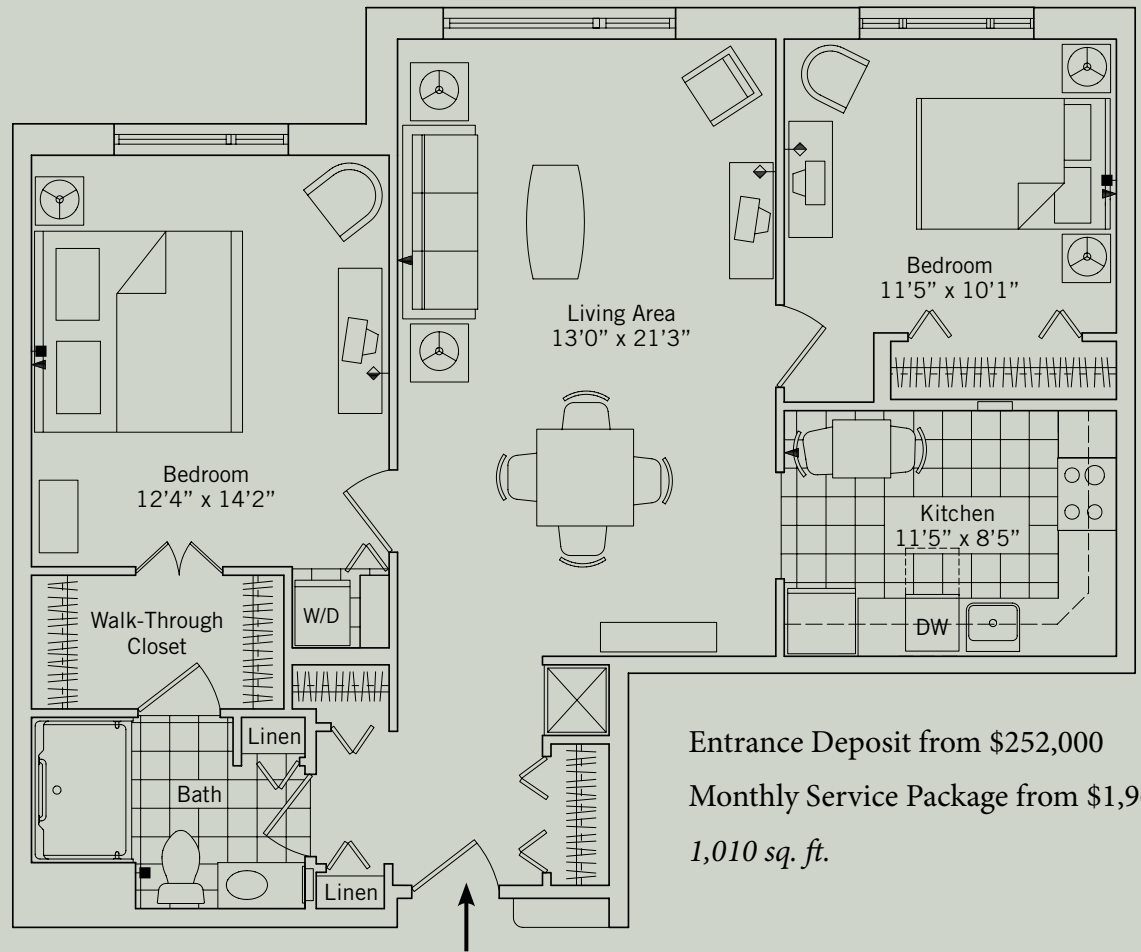
“My advice to people is not to wait too long to move here. You can still enjoy all the things you used to do —volunteerism, work—without all the other concerns.”

*Jim & Jackie Torri
Erickson Living® Residents
since 2003*

It’s perfect for us

“Our two bedroom home fits us to a tee,” says Jackie Torri. “We use the larger bedroom as a dual office. There are two desks, bookcases for both of us plus plenty of room for guests.” Before coming to the community, Jim and Jackie lived in a five bedroom house with space that went to waste. “There were so many rooms we closed up and never used. Here we have all the space we need,” recalls Jim.

Turn the page to discover the Fairmont, Maris Grove’s extra large two bedroom apartment home available now.



Entrance Deposit from \$252,000
 Monthly Service Package from \$1,962
 1,010 sq. ft.



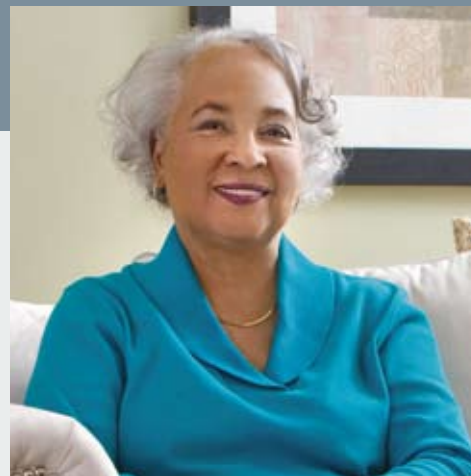
Extra large two bedroom

The Fairmont boasts an extra large master bedroom that opens into a roomy walk-through closet and full bath. The large, eat-in kitchen easily fits a breakfast table and chairs, so friends can drop in for a cup of coffee. If you're hosting out-of-town guests, the second bedroom serves as a very convenient home away from home.

The Fairmont



Dorothy



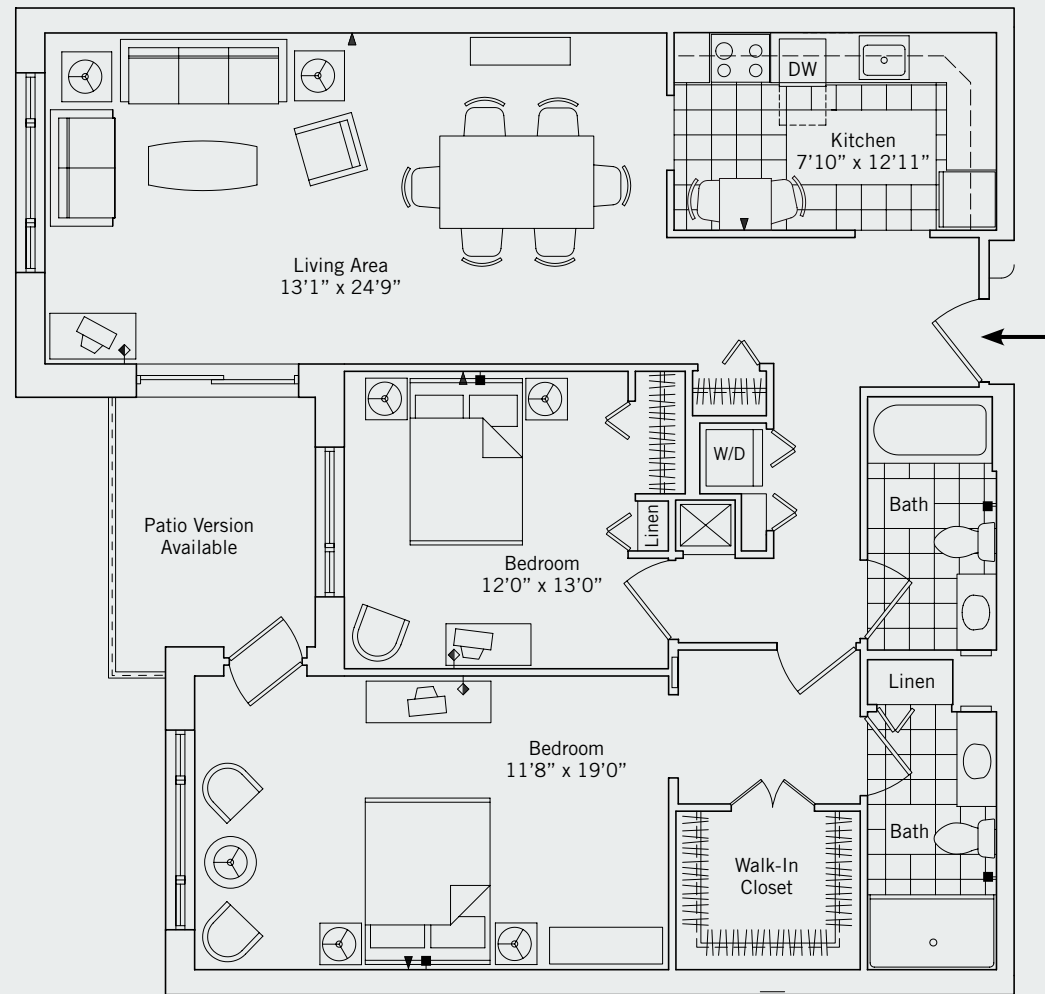
“I host Christmas Eve in our apartment. It’s a large crowd, but we all manage just fine.”

*Dorothy Gerald
Erickson Living Resident
since 2004*

The two bedroom is the perfect fit

Dorothy Gerald loves to entertain. “I chose a two bedroom, two bath home because I have grandchildren who love to visit us. I needed the extra bedroom and bath for them,” says Dorothy. When she’s not entertaining, Dorothy enjoys sitting out on the patio, admiring the view and listening to the fountain.

Read on to see details on the Manchester, Maris Grove’s deluxe two bedroom, two bath apartment home with a recessed patio that may be the perfect fit for you.



Entrance Deposit
from \$348,000

Monthly Service Package
from \$2,259

1,304 sq. ft.

The Manchester



Deluxe two bedroom, two bath with recessed patio

The Manchester offers a large walk-through kitchen equipped with beautiful modern appliances. A private recessed patio is the perfect place to enjoy your morning coffee or lemonade with friends, and the second bedroom is ideal if your guests choose to spend the night.

opportunities

When you choose an apartment at Maris Grove, you're choosing a community that lets you have control of the life you want to live. Not only will you have an endless list of opportunities, but you'll soon discover why so many people love to call Maris Grove home.





visit.



We only have a limited number of apartment homes, so don't delay. Call **1-800-403-9178** today to schedule your visit to review these and other available floor plans.



Photographs in this advertisement are representative of the floor plan described. Actual apartment home features may vary.



Maris Grove

Add more Living to your Life®

200 Maris Grove Way, Glen Mills, PA 19342

1-800-403-9178

EricksonLiving.com



EQUAL HOUSING
OPPORTUNITY
7136753